



Madison, Wisconsin

# CITY OF MADISON

CITY ENGINEERING DIVISION

DEPARTMENT OF PUBLIC WORKS

## PLAN OF PROPOSED IMPROVEMENT

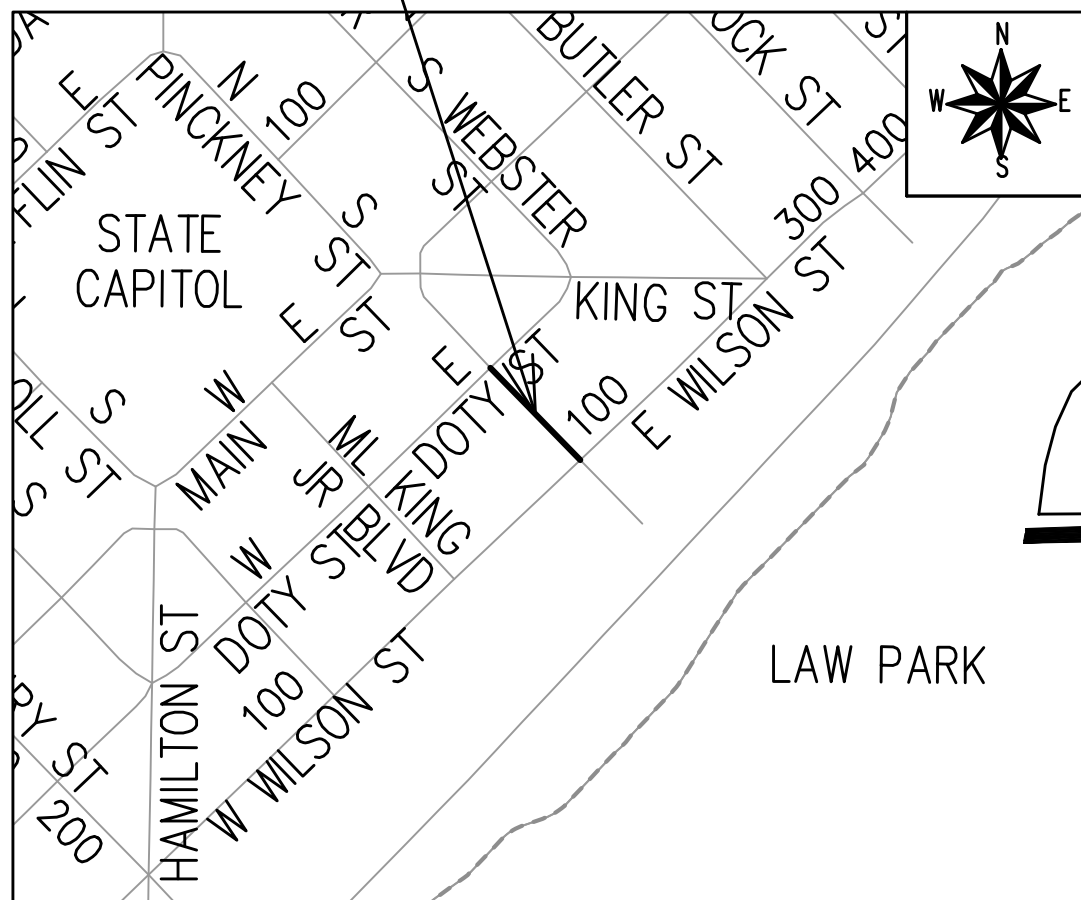
### S. PINCKNEY STREET ASSESSMENT DISTRICT - 2023

**INDEX OF SHEETS**

SHEET NO. P1	STREET PLAN & PROFILE
SHEET NO. P2	MEDIAN ISLAND PLAN
SHEET NO. U1	UTILITY PLAN & PROFILE
SHEET NO. U2	STORM SEWER SCHEDULE
SHEET NO. M1	PAVEMENT MARKING PLAN
SHEET NO. X1-X2	CROSS SECTIONS
SHEET NO. MN1	MAINTENANCE PLAN

**PROJECT LOCATION**

CITY PROJECT NO. 14216  
CONTRACT NO. 8694



CONVENTIONAL SIGNS	
FIELD VERIFY ALL UTILITY LOCATIONS	
GAS	— G —
STORM SEWER	— ST —
SANITARY SEWER	— SAN —
WATER	— W —
BURIED ELECTRIC	— E —
OVERHEAD ELECTRIC	— OH —
POWER POLE	
ADA COMPLIANT RAMP W/ DETECTABLE WARNING FIELD	
COMBUSTIBLE FLUIDS	

**NOTES:**  
ALL GUTTERS SHALL DRAIN WITH A MINIMUM GRADE OF 0.50% TOWARD STORM SEWER INLETS.

SIDEWALK RAMPS AND CURB THRU SIDEWALK RAMPS SHALL HAVE A MAXIMUM SLOPE OF 1" PER 12", SIDEWALK AND CURB RAMPS SHALL BE CONSTRUCTED WITH A SIDE SLOPE OF 1.50%. SIDEWALK SHALL HAVE A MINIMUM LONGITUDINAL SLOPE OF 0.50% AND A MAXIMUM LONGITUDINAL SLOPE OF 5.00% EXCEPT WHERE STREET GRADES EXCEED 5.00%.

**EARTH WORK SUMMARY:**  
EXCAVATION CUT (MEASURED PLAN QUANTITY) = 70 C.Y.  
ESTIMATED UNDISTRIBUTED UNDERCUT = 5 C.Y.  
TOTAL UNCLASSIFIED EXCAVATION CUT = 75 C.Y.

PUBLIC IMPROVEMENT PROJECT APPROVED

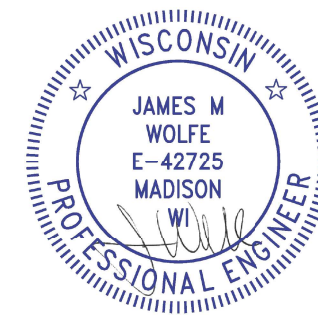
APPROVED DATE: OCTOBER 25, 2022

BY THE COMMON COUNCIL OF MADISON, WISCONSIN

PUBLIC IMPROVEMENT DESIGN APPROVED BY:

*[Signature]* Nov 18, 2022  
City Engineer Date

STREET DESIGNED BY:



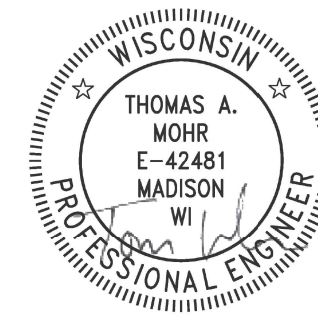
Nov 18, 2022

STORM SEWER DESIGNED BY:



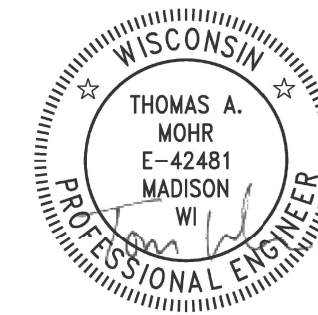
Nov 18, 2022

PAVEMENT MARKINGS DESIGNED BY:



Nov 18, 2022

GEOMETRY DESIGNED BY:



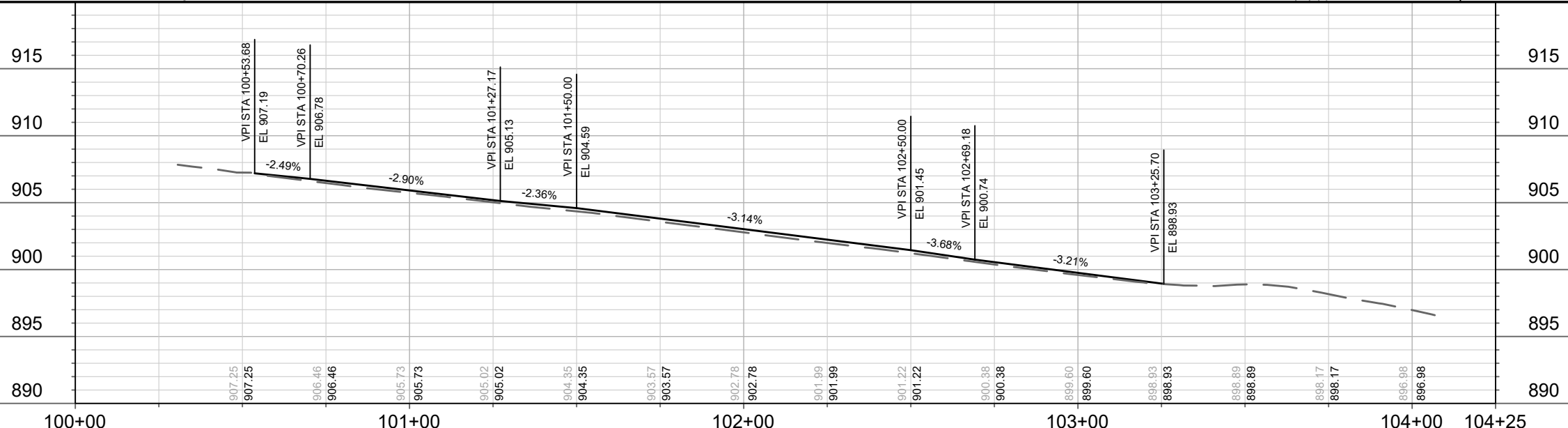
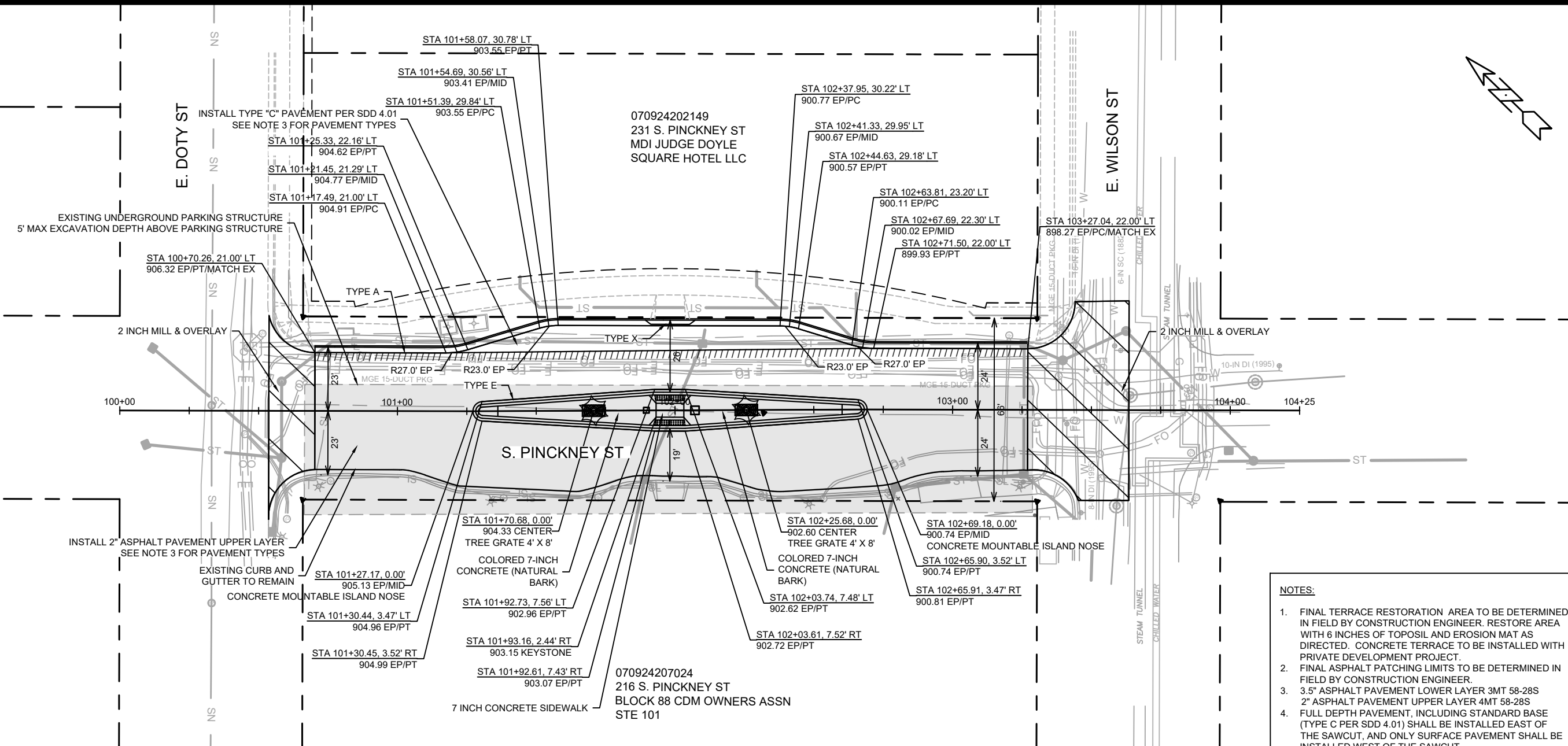
Nov 18, 2022

PLOT SCALE: 1 IN. = 1 FT. XREF

PLOT NAME: ----

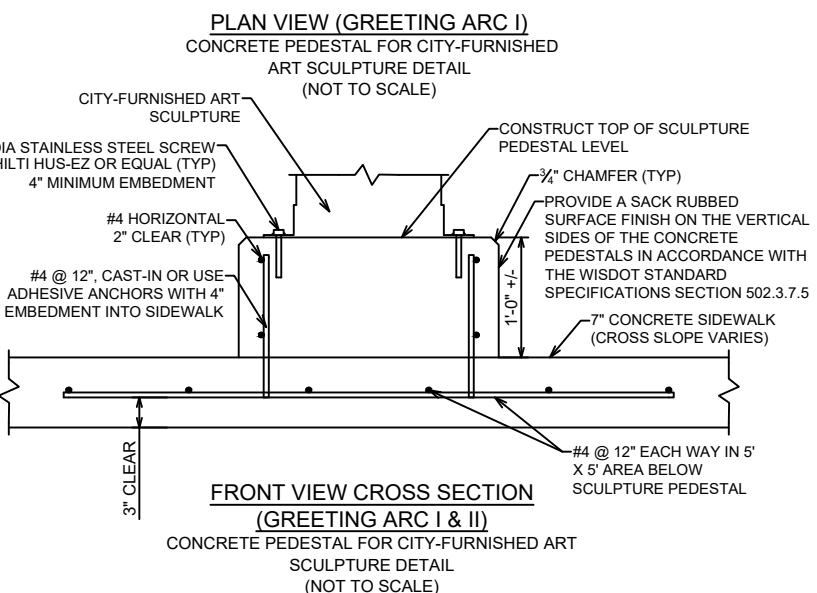
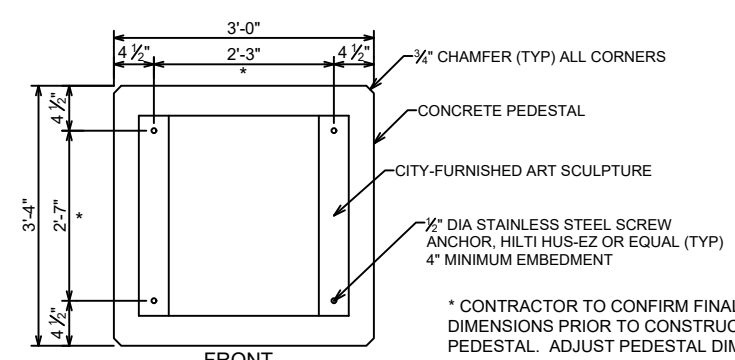
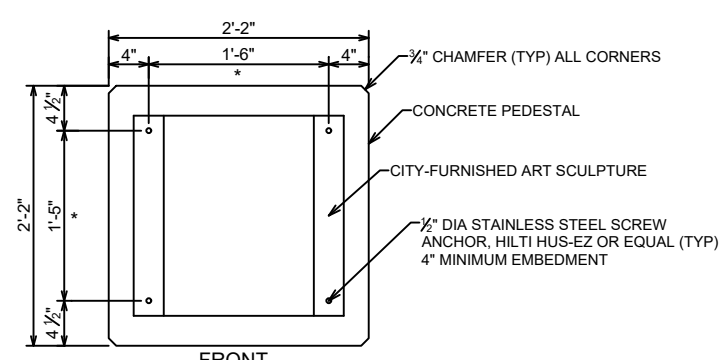
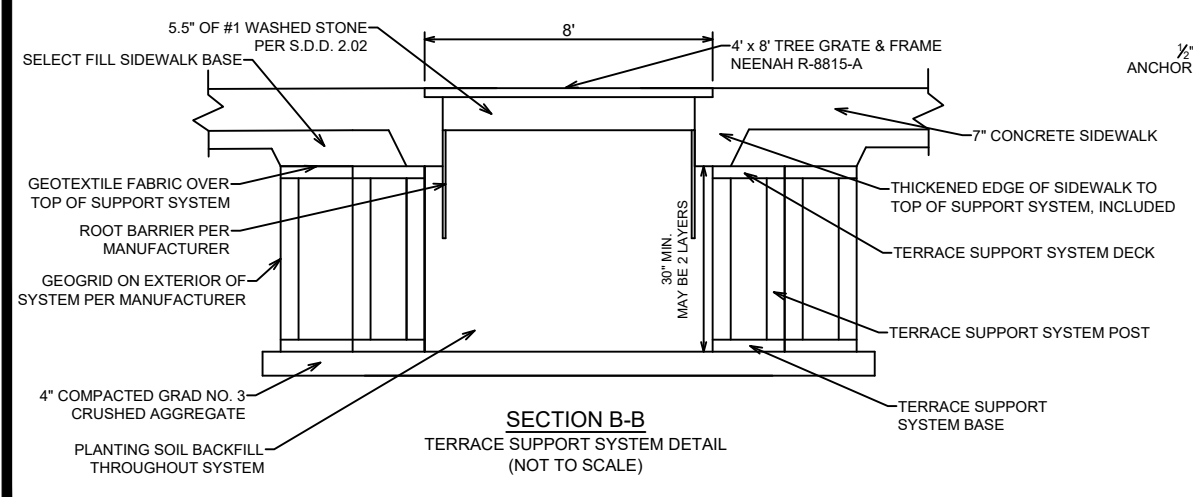
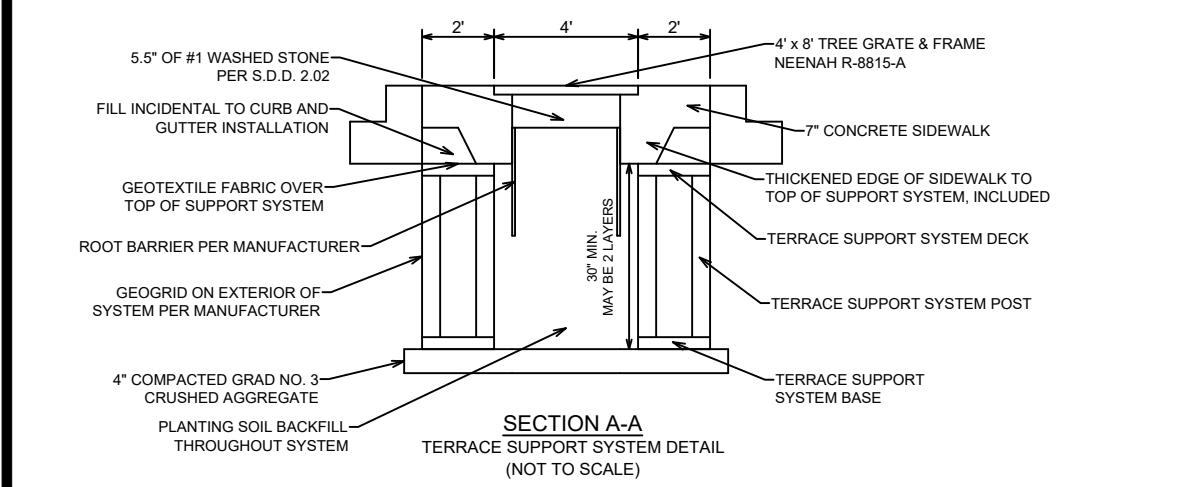
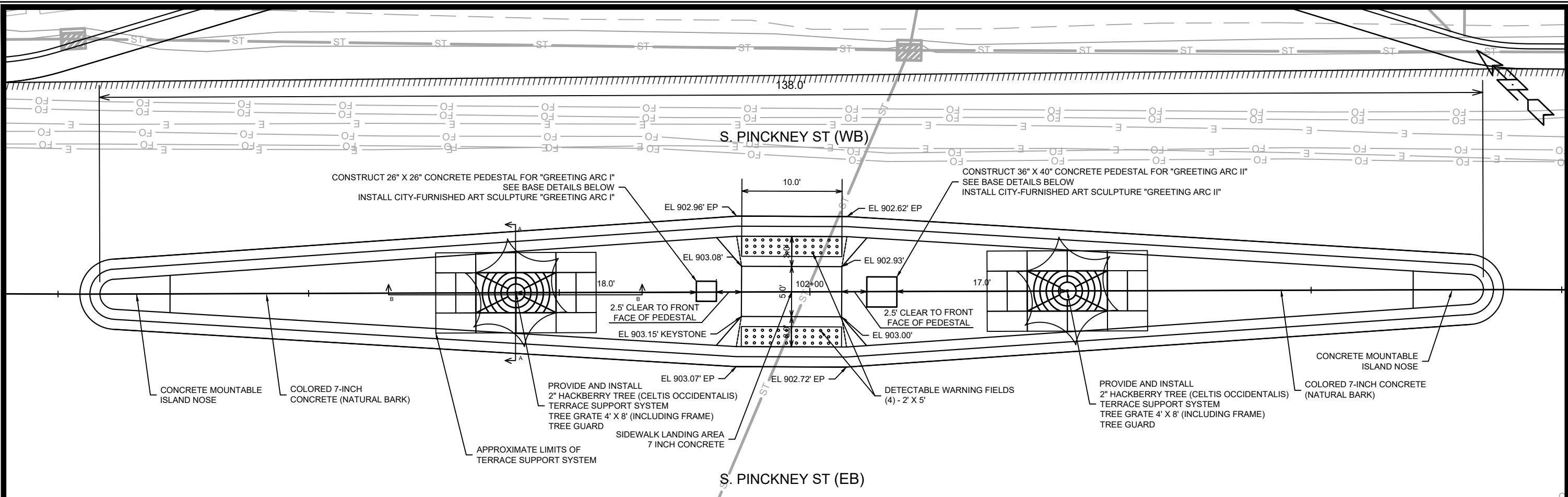
REV. DATE: 11/14/2022 4:51 PM

ORIGINATOR: CITY\_OF\_MADISON



- NOTES:**
1. FINAL TERRACE RESTORATION AREA TO BE DETERMINED IN FIELD BY CONSTRUCTION ENGINEER. RESTORE AREA WITH 6 INCHES OF TOPOSIL AND EROSION MAT AS DIRECTED. CONCRETE TERRACE TO BE INSTALLED WITH PRIVATE DEVELOPMENT PROJECT.
  2. FINAL ASPHALT PATCHING LIMITS TO BE DETERMINED IN FIELD BY CONSTRUCTION ENGINEER.
  3. 3.5" ASPHALT PAVEMENT LOWER LAYER 3MT 58-28S  
2" ASPHALT PAVEMENT UPPER LAYER 4MT 58-28S  
FULL DEPTH PAVEMENT, INCLUDING STANDARD BASE (TYPE C PER SDD 4.01) SHALL BE INSTALLED EAST OF THE SAWCUT, AND ONLY SURFACE PAVEMENT SHALL BE INSTALLED WEST OF THE SAWCUT.

14216	MADISON, WI	8694	CONTRACT NO:
STREET PLAN & PROFILE - S. PINCKNEY ST			
S. PINCKNEY STREET ASSESSMENT DISTRICT - 2023			
M:\DESIGN\Projects\14216\CAD\Streets\14216EN-Corridor.dwg			
14216		P-1	



- NOTES:
1. CONTRACTOR SHALL CONTACT CITY FORESTRY (608) 266-4816 AT LEAST ONE WEEK PRIOR TO PLANTING TO SCHEDULE INSPECTING THE NURSERY STOCK AND REVIEW PLANTING SPECIFICATIONS WITH THE LANDSCAPER.
  2. CONTRACTOR SHALL CONTACT CITY FORESTRY AT (608) 266-4816 TO IDENTIFY AND LOCATE UNDERGROUND CONFLICTS (UTILITIES, VAULTS, CONDUIT) OR OTHER UNDERGROUND OBSTRUCTIONS AND DETERMINE GRATE LOCATIONS NO LATER THAN FIVE (5) BUSINESS DAYS PRIOR TO INSTALLING TERRACE SUPPORT SYSTEMS AND CONSTRUCTING TREE GRATE SITES.
  3. LOCATIONS OF TREE GRATES AND APPROXIMATE LIMITS OF TERRACES SUPPORT SYSTEM ARE SHOWN P SHEETS. THE FINAL LAYOUT OF THE TERRACE SUPPORT SYSTEM IS DEPENDENT ON THE MANUFACTURER SELECTED BY THE CONTRACTOR. CONTRACTOR SHALL CONFIRM A LAYOUT WITH THE ENGINEER PRIOR TO INSTALLATION.
  4. TERRACE SUPPORT SYSTEM SHALL BE INSTALLED PER THE MANUFACTURER'S RECOMMENDATIONS INCLUDING ALL FABRICS, GEOGRID, AND ROOT BARRIERS. MINIMUM DEPTH OF THE SYSTEM IS PROVIDED ON THE DETAIL, AND THIS MAY BE ACHIEVED IN A SINGLE LAYER OR TWO LAYERS.
  5. THE PERIMETER OF THE SYSTEM AT EACH PLANTING LOCATION SHALL BE ENCLOSED WITH A GEOGRID AND THE TOP SURFACE IS TO BE COVERED WITH A FABRIC THAT IS TO BE HELD IN PLACE WITH A THICKENED CONCRETE EDGE AS SHOWN ON THE DETAIL.
  6. BACKFILL THE ENTIRE SYSTEM WITH PLANTING SOIL (PAID SEPARATELY) TO WITHIN 5\"/>
  - 7. CONTACT KARIN WOLF 1 WEEK IN ADVANCE OF ART INSTALLATION TO COORDINATE DELIVERY AND INSTALLATION. 608-261-9134, KWOLF@CITYOFMADISON.COM

DATE	BY
REVISION	
DESIGNED BY: ###	Scale: 1:10
MARK	14216
CONTRACT NO.:	8694
MADISON, WI	
14216	
S. PINCKNEY STREET ASSESSMENT DISTRICT - 2023	
M:\DESIGN\Projects\14216\CAD\Streets\14216EN-Corridor.dwg	
CITY OF MADISON WISCONSIN	
14216	
P-2	

070924203064  
107 King St  
107 KING ST LLC

070924203056  
121 S Pinckney St  
SPRING PROPERTIES LLC

070924202149  
231 S Pinckney St  
MDI JUDGE DOYLE SQUARE  
HOTEL LLC

070924213097  
101 E Wilson St  
STATE OF WISCONSIN  
DEPT OF ADMINISTRATION

S. PINCKNEY ST

EX IN #5150-044  
EX 12" PVC STM  
EX SAS #5150-023  
100+00

EX IN #5150-072  
EX 12" PVC STM

070924204161  
10 E Doty St  
BLOCK 89 AIR RIGHTS LTD  
PARTNERSHIP

E. DOTY ST

EX SAS #5150-022  
EX 6" VCP SAN

S. PINCKNEY ST

SIDEWALK ESMT (CSM) DOC 5348219

070924207024  
216 S Pinckney St Unit CDM  
BLOCK 88 CDM OWNERS ASSN  
STE 101

S. PINCKNEY ST

EX 18" RCP STM

EX 12" RCP STM

EX IN #5150-144

EX IN #5150-145

EX 12" PVC STM

EX AS#5150-146

S. PINCKNEY ST

EX AS #5150-122  
EX 21" RCP STM  
EX 8" PVC SAN  
EX SAS #5150-019

EX 8" PVC SAN

EX AS #5150-052

EX 21" RCP STM

EX 12" PVC STM

EX 8" PVC SAN

EX SAS #5150-054

070924201141  
29 E Wilson St  
LINK, PAUL & THOMAS

920

915

910

905

900

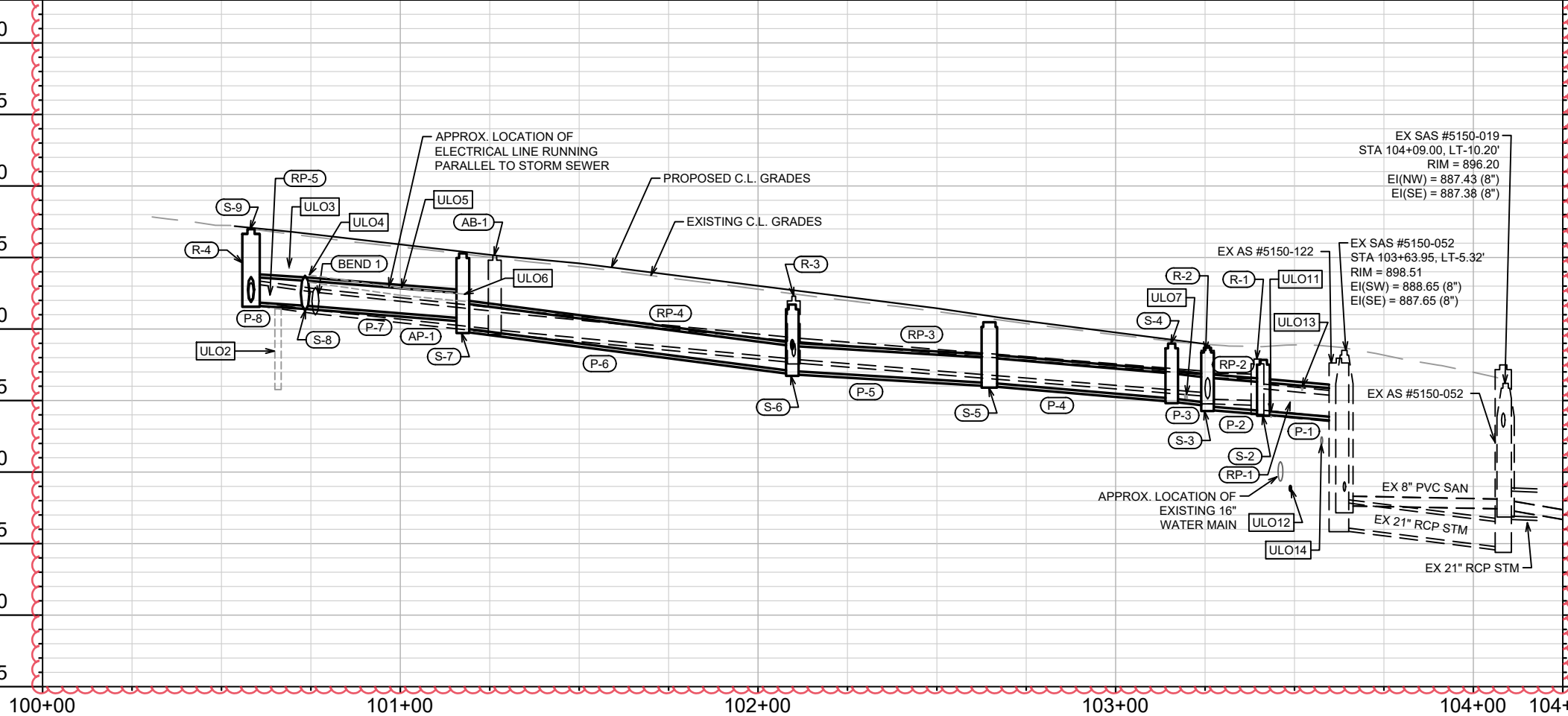
895

890

885

880

875



100+00

101+00

102+00

103+00

104+00

104+25

14216

MADISON, WI

8694

CONTRACT NO.:

SEWER PLAN AND PROFILE - S. PINCKNEY ST

S. PINCKNEY STREET ASSESSMENT DISTRICT - 2023

M:\DESIGN\Projects\14216\CAD\Drawings\14216 SWR-PipeNetwork.dwg



14216

U-1

DATE	BY
8/28/23	KDF
REVISION	
14216	
DATE	BY
8/28/2023 2:13 PM	U-1
Scale:	1" = 40'



# STORM SEWER SCHEDULE

\*REV 8/22/2023 KDF

S. PINCKNEY STREET ASSESSMENT	SHEET NO.
DISTRICT - 2022	U-2
PROJECT NO. 14216	
STORM SEWER SCHEDULE	
CITY OF MADISON	

## PROPOSED STORM STRUCTURES

STRUC. NO.	STATION	LOCATION (OFFSET)	TYPE	TOP OF CASTING	E.I.	DEPTH	NOTES
<b>S. PINCKNEY STREET</b>							
* S-1	103+62.39	LT-28.43	TAP	-	893.81	-	-
* S-2	103+41.30	LT-18.67	2X3 SAS	897.84	894.27	3.57	[1], FP, W/R-1550-0054
* S-3	103+25.65	LT-23.50	3X3 SAS	898.69	894.60	4.09	W/R-3067-7004V
S-4	103+15.67	LT-23.50	3X3 SAS	898.98	895.15	3.83	W/R-3067-7004V
S-5	102+64.70	LT-24.51	3X3 SAS	900.47	896.23	4.24	W/R-3067-7004V
S-6	102+09.59	LT-23.11	3X3 SAS	901.71	897.06	4.65	W/R-1550-0054
* S-7	101+17.50	LT-22.50	3X3 SAS	905.29	900.05	5.24	FP, W/R-3067-7004V
* S-8	100+73.39	LT-22.50	BEND	-	901.63	-	[2], [3]
* S-9	100+58.27	LT-10.55	3X3 SAS	906.98	901.88	5.10	W/R-1550-0054
* S-10	100+58.30	RT-16.97	4X4 SAS	906.94	902.02	4.92	W/R-1550-0054

## REMOVE STORM STRUCTURES

STRUC. NO.	STATION	LOCATION (OFFSET)	TYPE	TOP OF CASTING	E.I.	DEPTH	NOTES
<b>S. PINCKNEY STREET</b>							
R-1	103+39.64	LT-17.84	SAS	897.90	894.36	3.54	-
R-2	103+25.72	LT-23.75	INLET	898.83	895.10	3.73	-
R-3	102+09.99	LT-24.03	SAS	902.30	897.89	4.41	-
R-4	100+58.27	LT-10.55	SAS	907.02	901.93	5.09	-
* R-5	100+58.27	LT-10.55	SAS	907.02	901.93	5.09	-

## ABANDON STORM STRUCTURES

STRUC. NO.	STATION	LOCATION (OFFSET)	TYPE	TOP OF CASTING	E.I.	DEPTH	NOTES
<b>S. PINCKNEY STREET</b>							
AB-1	101+26.41	LT-25.43	INLET	905.14	899.95	5.19	-

## STORM SEWER ULOs (5 ADDITIONAL INDISTRIBUTED ULOs INCLUDED)

ULO NO.	STATION	LOCATION (OFFSET)	TYPE	TOP ELEV.	NOTES
<b>S. PINCKNEY STREET</b>					
* ULO1A	100+56.94	RT-8.88	4" FIBER OPTIC	904.40	CONFLICT, STORM REVISED
* ULO1B	100+56.94	RT-8.88	3" FIBER OPTIC	904.63	CONFLICT, STORM REVISED
* ULO1C	100+56.94	RT-8.88	1" FIBER OPTIC	904.83	OK
* ULO2	100+66.72	LT-16.41	ELECTRIC DUCT	901.40	CONFLICT, STM REVISED, BTM=895.77
* ULO3	100+68.89	LT-19.98	2-1" FIBER OPTIC	904.34	OK
* ULO4	100+74.47	LT-24.62	6" ELECTRIC	903.77	OK
* ULO5	101+00.25	LT-23.90	6" ELECTRIC	902.85	OK
* ULO6	101+18.11	LT-25.31	6" ELECTRIC	902.43	OK
* ULO7A	103+19.87	LT-24.43	3" FIBER OPTIC	895.41	CONFLICT, RELOCATE, TE STREET LIGHT
* ULO7B	103+19.40	-24.41	3" FIBER OPTIC	895.42	CONFLICT, RELOCATE, TE STREET LIGHT
* ULO8	103+35.34	LT-20.70	1" FIBER OPTIC	894.98	CONFLICT, RELOCATE (LUMEN)
* ULO9	103+36.44	LT-17.02	ELECTRIC MH	892.88	OK
* ULO10	103+41.74	LT-16.65	ELECTRIC MH	892.91	OK
* ULO11A	103+43.44	LT-20.41	1" FIBER OPTIC	894.17	CONFLICT, STORM REVISED
* ULO11B	103+43.44	LT-20.41	1" FIBER OPTIC	893.91	CONFLICT, STORM REVISED
* ULO12	103+48.83	LT-24.32	4" SANITARY LAT	889.03	OK
* ULO13	103+52.11	LT-24.70	3" TELEPHONE	895.94	CONFLICT, RELOCATE (AT&T)
* ULO14	103+57.59	LT-27.19	WATER	892.45	OK

## SPECIFIC NOTES:

- [1] 2X3 SAS IS PAID AS AN H INLET
- [2] INSTALL ELECTRONIC MARKER BALL ABOVE COLLAR OR BEND
- [3] BEND IS A 40 DEGREE BEND

## PROPOSED STORM PIPES

PIPE NO.	FROM (DNSTM)	TO (UPSTM)	DISCH. E.I.	INLET E.I.	PLAN (PAY) LGTH (FT)	PIPE LGTH (FT)	SLOPE (%)	PIPE SIZE	TYPE	NOTES
<b>S. PINCKNEY STREET</b>										
* P-1	S-1	S-2	893.81	894.27	23.5	19.2	2.40%	24"	RCP	-
* P-2	S-2	S-3	894.27	894.60	16.5	13.2	2.49%	24"	RCP	-
* P-3	S-3	S-4	894.85	895.15	10	7.0	4.26%	21"	RCP	-
* P-4	S-4	S-5	895.15	896.23	51	48.2	2.24%	21"	RCP	-
P-5	S-5	S-6	896.23	897.06	55	52.1	1.59%	21"	RCP	-
P-6	S-6	S-7	897.06	900.05	92	89.0	3.36%	21"	RCP	-
* P-7	S-7	S-8	900.75	901.63	44	42.7	2.06%	21"	RCP	-
* P-8	S-8	S-9	901.63	901.88	20	17.7	1.41%	21"	RCP	-
* P-9	S-9	S-10	901.88	902.02	28	23.7	0.59%	21"	RCP	-

## REMOVE STORM PIPES

REMOVE NO.	REMOVE FROM	REMOVE TO	LGTH (FT)	PAY LGTH (FT)	PIPE SIZE	PIPE TYPE	NOTES
<b>S. PINCKNEY STREET</b>							
RP-1	S-1	R-1	21	0	18"	RCP	-
RP-2	R-1	R-2	12	0	18"	RCP	-
RP-3	R-2	R-3	113	0	15"	RCP	-
RP-4	R-3	R-4	81	0	15"	RCP	-
RP-5	S-8	R-5	22	0	15"	RCP	-
RP-6	R-5	S-10	24	0	15"	RCP	-

## STORM SEWER ABANDONMENTS

PIPE NO.	FROM (DNSTM)	TO (UPSTM)	LGTH (FT)	PIPE SIZE	PIPE TYPE	PAID (Y/N)	NOTES
<b>S. PINCKNEY STREET</b>							
AP-1	AB-1	S-8	49	0	15"	RCP	ABAN W/ PLUGS (2 PLUGS)

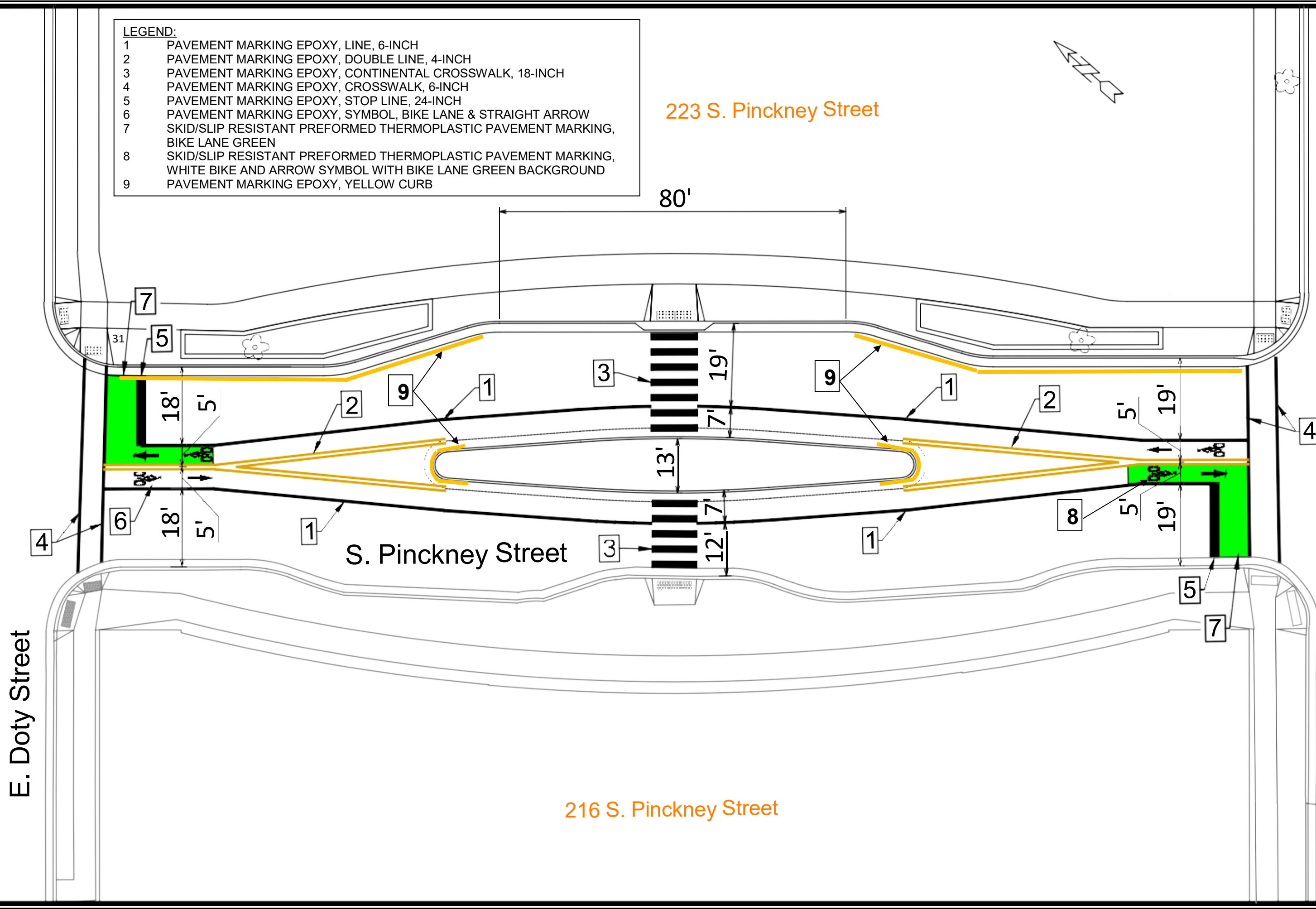
**NOTE:** PLAN LENGTH (PAY LENGTH) IS FROM CENTER OF STRUCTURE TO CENTER OF STRUCTURE. PIPE LENGTH IS ACTUAL LENGTH OF PIPE FROM STRUCTURE WALL TO STRUCTURE WALL. SLOPE CALCULATED USING PIPE LENGTH.

## STANDARD NOTES:

- ABBREVIATIONS: AE = APRON ENDWALL; RCP = REINFORCED CONCRETE PIPE; HERCP = HORIZONTAL ELLIPTICAL REINFORCED CONCRETE PIPE; DNA = DOES NOT APPLY; SAS = SEWER ACCESS STRUCTURE; LP = LOW POINT INLET STRUCTURE; FP = FIELD POURED STRUCTURE; TR = TOP OF CONCRETE ROOF; NCM = NO CROWN MATCH FOR PIPES; UD = UNDERDRAIN
- TOP OF CASTING GRADE GIVEN IS THE TOP OF CURB FOR INLET STRUCTURES AND THE FLOWLINE OF THE CLOSED CASTING FOR SASs.
- TOP OF CONCRETE ROOF (TR) IS 1.25 BELOW TOP OF CASTING UNLESS OTHERWISE NOTED.
- ALL REINFORCED CONCRETE PIPES TO BE CLASS III UNLESS OTHERWISE NOTED.
- SURVEYOR TO CONFIRM THAT ALL INLET STATION / OFFSETS LINE UP WITH PROPOSED CURB AND GUTTER.
- ALL REBAR FOR FIELD POUR STRUCTURES SHALL BE EPOXY COATED. ANY EXPOSED STEEL SHALL BE TOUCHED UP OR RECOATED PRIOR TO USE.
- ALL FIELD POURED SAS STORM STRUCTURES SHALL BE CONSTRUCTED IN ACCORDANCE WITH STANDARD DETAIL DRAWING 5.7.3.
- ALL PRECAST SAS STORM STRUCTURES SHALL BE CONSTRUCTED IN ACCORDANCE WITH STANDARD DETAIL DRAWING 5.7.5.
- ALL STRUCTURES CALLED OUT AS FIELD POURED SHALL BE FIELD POURED. ALL OTHER STRUCTURES (NOT INDICATED AS FIELD POURED) SHALL BE SUBMITTED TO CITY ENGINEERING FOR APPROVAL IF PRECAST STRUCTURES ARE PREFERRED. CONTACT KYLE FRANK OF CITY ENGINEERING AT (608) 266-4098 FOR PRECAST APPROVALS, FAX SHOP DRAWINGS TO (608)264-9275, OR EMAIL SHOP DRAWINGS TO KFRANK@CITYOFMADISON.COM.

**LEGEND:**

- 1 PAVEMENT MARKING EPOXY, LINE, 6-INCH
- 2 PAVEMENT MARKING EPOXY, DOUBLE LINE, 4-INCH
- 3 PAVEMENT MARKING EPOXY, CONTINENTAL CROSSWALK, 18-INCH
- 4 PAVEMENT MARKING EPOXY, CROSSWALK, 6-INCH
- 5 PAVEMENT MARKING EPOXY, STOP LINE, 24-INCH
- 6 PAVEMENT MARKING EPOXY, SYMBOL, BIKE LANE & STRAIGHT ARROW
- 7 SKID/SLIP RESISTANT PREFORMED THERMOPLASTIC PAVEMENT MARKING, BIKE LANE GREEN
- 8 SKID/SLIP RESISTANT PREFORMED THERMOPLASTIC PAVEMENT MARKING, WHITE BIKE AND ARROW SYMBOL WITH BIKE LANE GREEN BACKGROUND
- 9 PAVEMENT MARKING EPOXY, YELLOW CURB

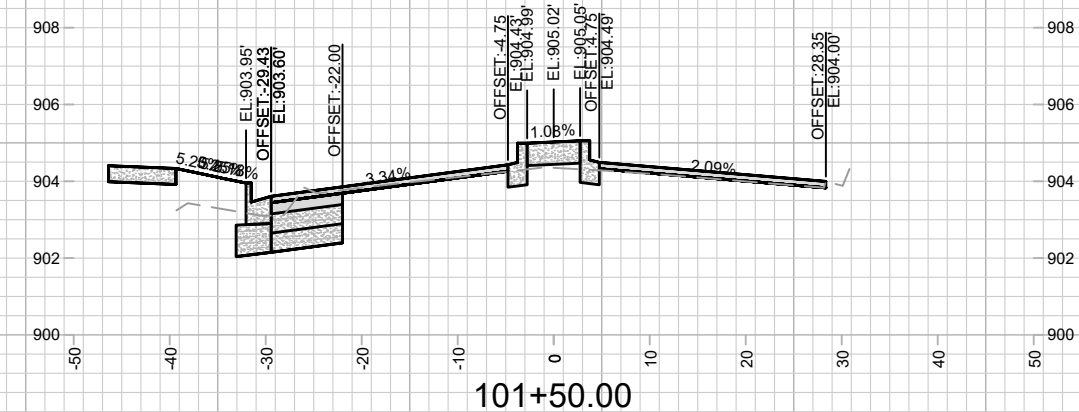
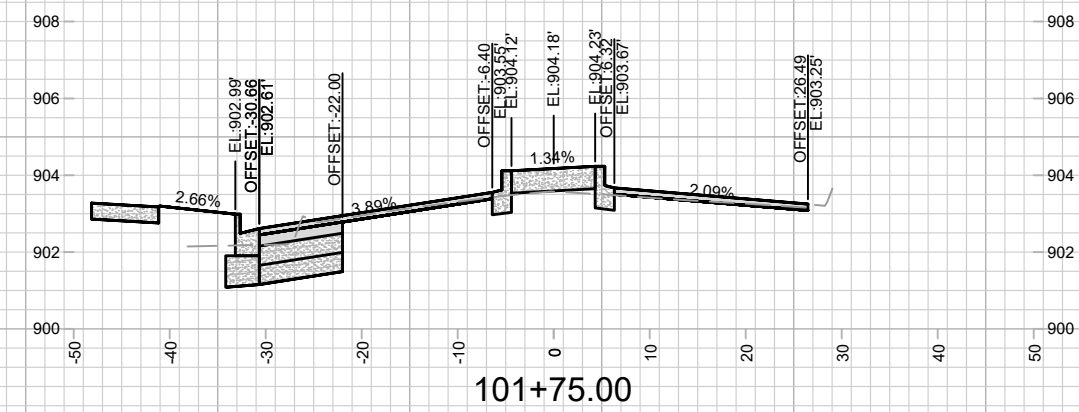
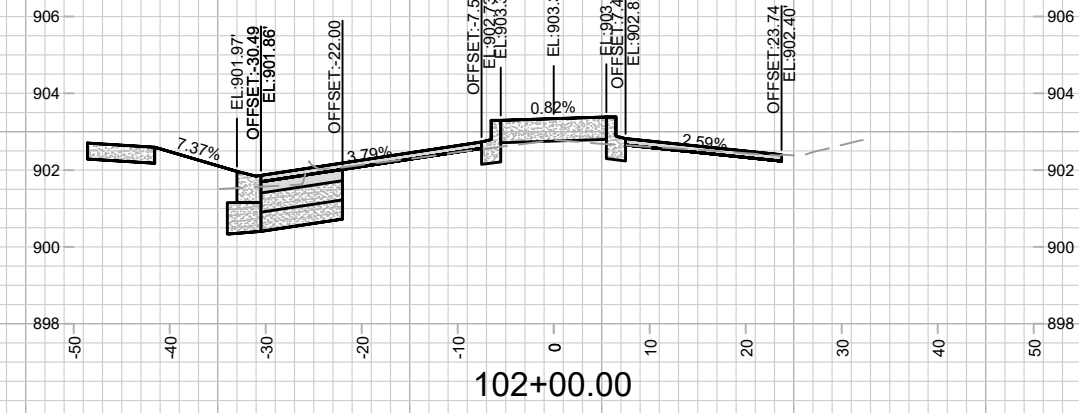
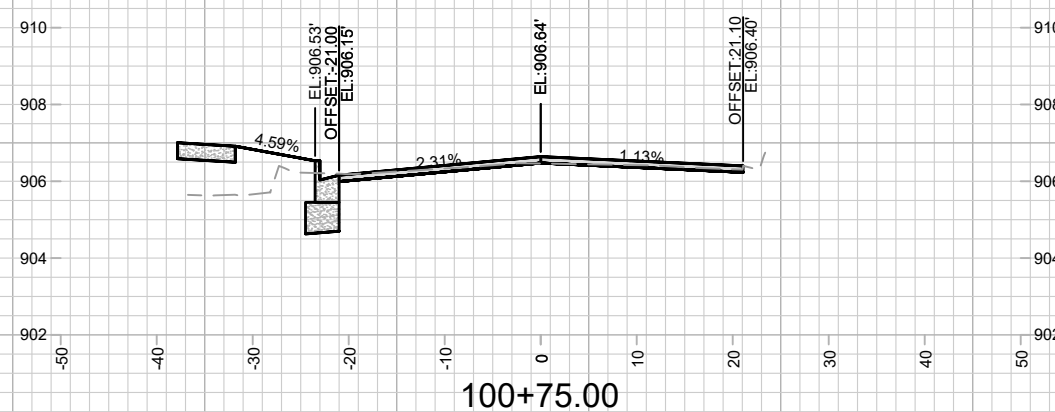
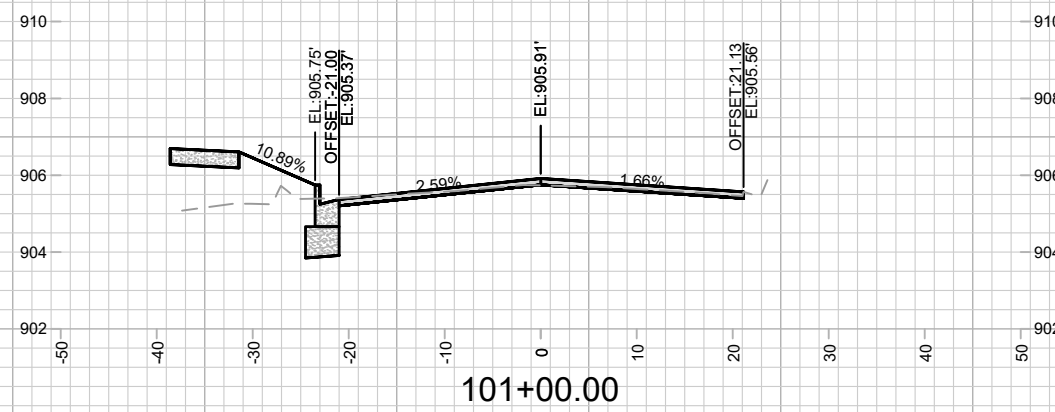
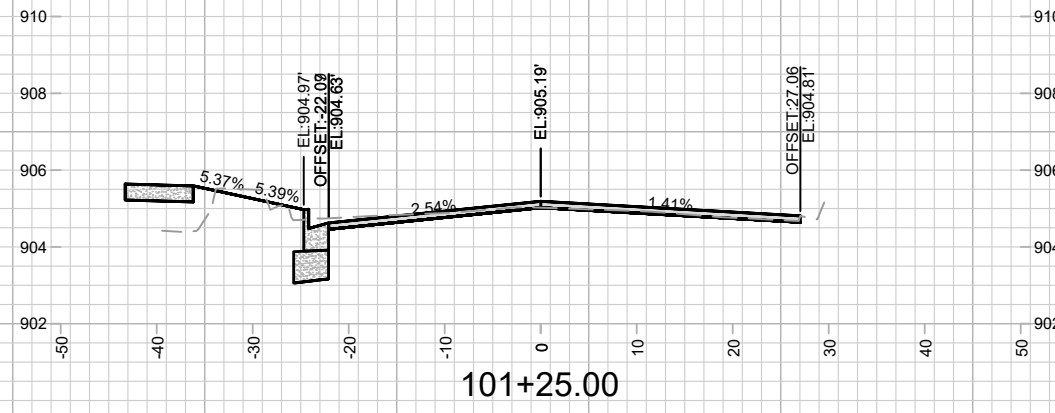


DATE	BY
11/15/2022 11:28 AM	EX-1
14216	

14216  
MADISON, WI  
CONTRACT NO: ---

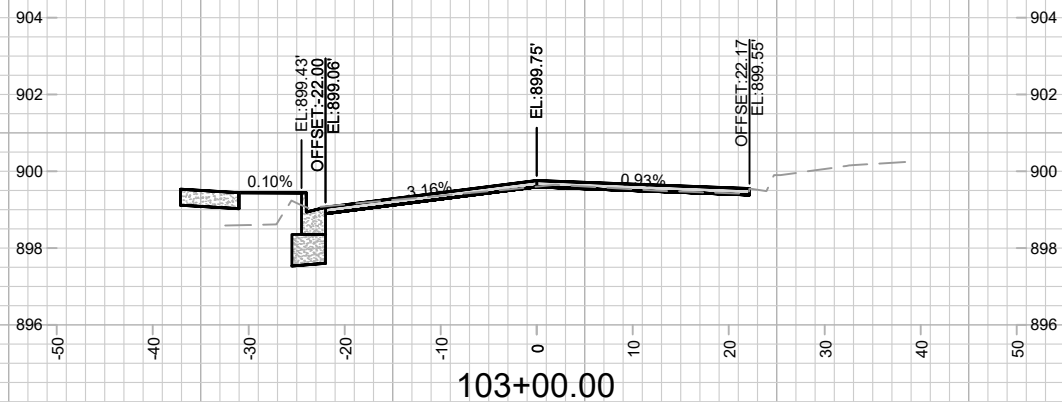
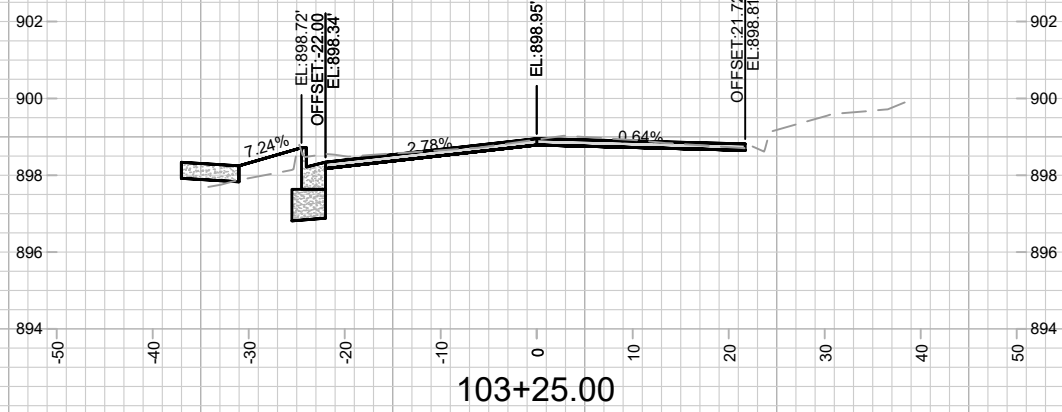
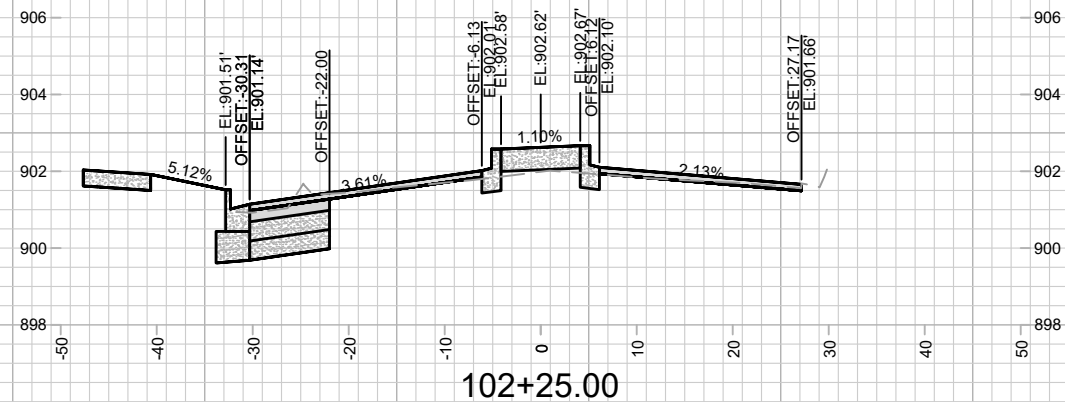
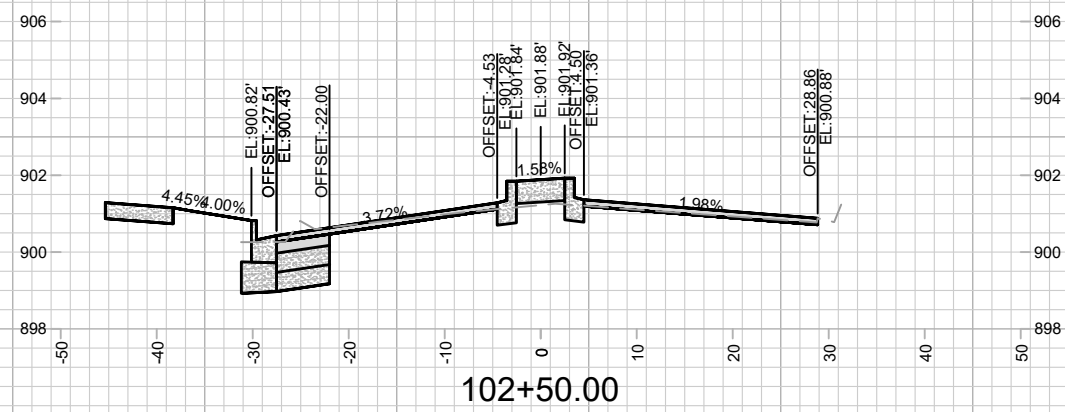
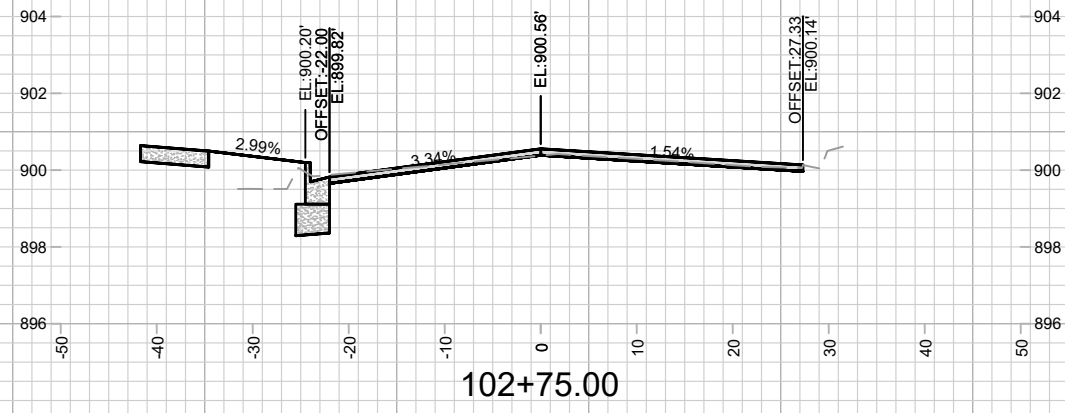
PAVEMENT MARKING PLAN  
S. PINCKNEY STREET  
M:\DESIGN\Projects\14216\CAD\Traffic\14216TE-Geometrics.dwg

14216  
PM1



NOTES:  
 1. SIDEWALK TO BE INSTALLED WITH CITY OF MADISON PRIVATE DEVELOPMENT PROJECT (ID 13804, CONTRACT 9077) AND IS SHOWN FOR REFERENCE ONLY.

CROSS SECTIONS - S. PINCKNEY ST		14216	14216										
S. PINCKNEY STREET ASSESSMENT DISTRICT - 2023		MADISON, WI	14216										
M:\DESIGN\Projects\14216\CAD\Streets\14216EN-Corridor.dwg		CONTRACT NO:	8694										
		<table border="1"> <tr> <th>MARK</th> <th>REVISION</th> <th>DATE</th> <th>BY</th> </tr> <tr> <td> </td> <td> </td> <td> </td> <td> </td> </tr> </table>	MARK	REVISION	DATE	BY					<table border="1"> <tr> <td>Scale: #####</td> <td>X-1</td> </tr> </table>	Scale: #####	X-1
MARK	REVISION	DATE	BY										
Scale: #####	X-1												



NOTES:  
 1. SIDEWALK TO BE INSTALLED WITH CITY OF MADISON PRIVATE DEVELOPMENT PROJECT (ID 13804, CONTRACT 9077) AND IS SHOWN FOR REFERENCE ONLY.

MARK	REVISION	DATE	BY

Designed By: ###  
 Date: 11/14/2022 4:50 PM  
 Scale: #####

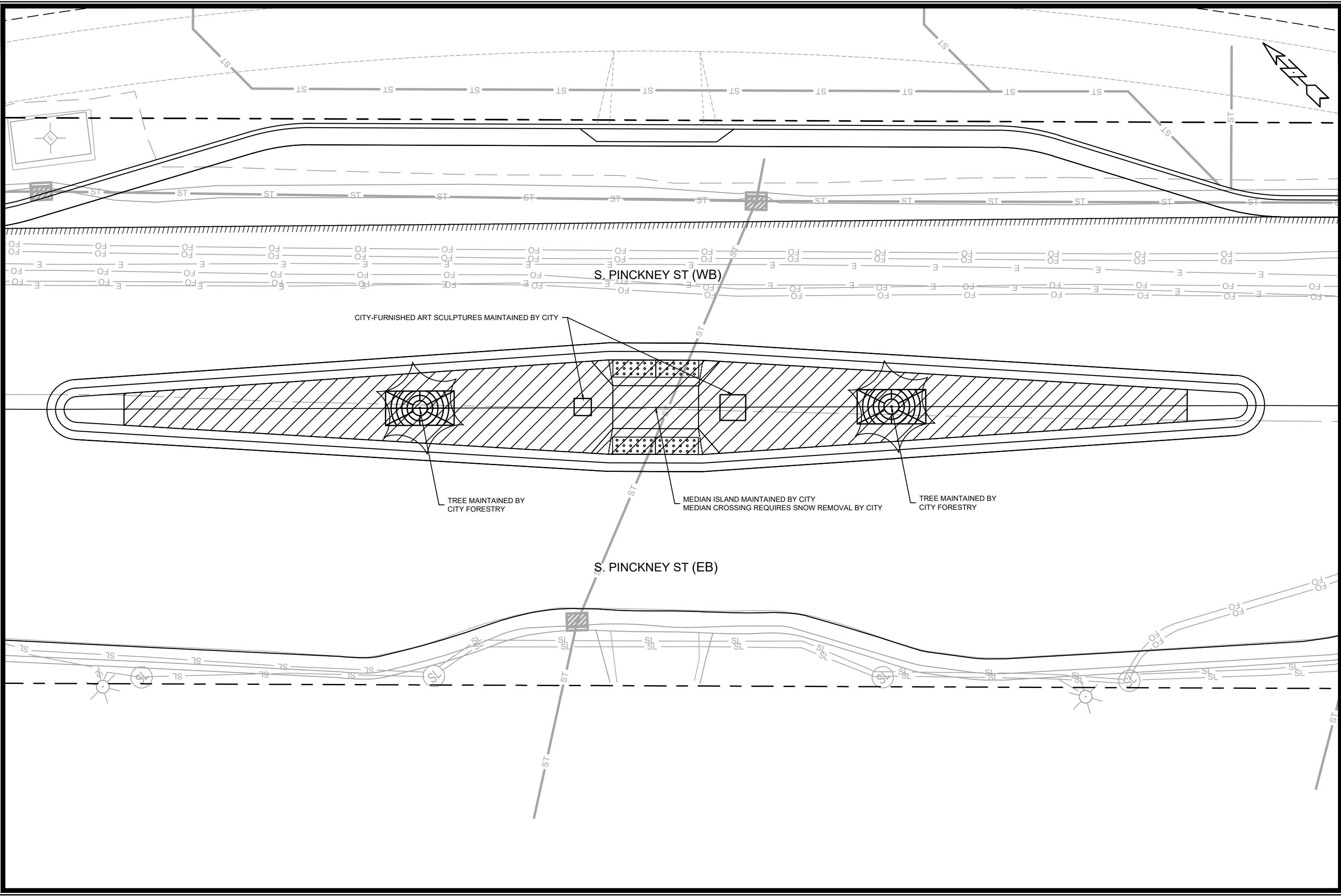
14216  
 MADISON, WI  
 8694  
 CONTRACT NO:

CROSS SECTIONS - S. PINCKNEY ST  
 S. PINCKNEY STREET ASSESSMENT DISTRICT - 2023  
 M:\DESIGN\Projects\14216\CAD\Streets\14216EN-Corridor.dwg



14216  
 X-2





CITY-FURNISHED ART SCULPTURES MAINTAINED BY CITY

TREE MAINTAINED BY CITY FORESTRY

MEDIAN ISLAND MAINTAINED BY CITY  
MEDIAN CROSSING REQUIRES SNOW REMOVAL BY CITY

TREE MAINTAINED BY CITY FORESTRY

S. PINCKNEY ST (WB)

S. PINCKNEY ST (EB)

MARK	REVISION	DATE	BY
14216	11/14/2022 6:27 PM	14216	MN-1
Designed By: ###			Scale: 1:10

14216  
MADISON, WI  
CONTRACT NO: 8694  
S. PINCKNEY STREET ASSESSMENT DISTRICT - 2023  
M:\DESIGN\Projects\14216\CAD\Streets\14216EN-Corridor.dwg



14216  
MN-1